



BIG
ON
IDEAS



BIG

BIG ON SPECIALIST
FLOORING

ON FIRST
IMPRESSIONS

THE **BIG**

BOOK OF COMMERCIAL FLOORING

BIG

on antistatic
protection

BIG
ON SPEED



BIG

ON
DESIGN

BIG
ON
SERVICE



BIG on
AESTHETICS



BIG on
DURABILITY



BIG

ON
SAFETY



BIG ON
HYGIENE

BIG on
CHEMICAL RESISTANCE



Welcome to Flowcrete...

Flowcrete Group Ltd is a world leader in the manufacture of seamless resin flooring systems and self levelling floor screeds for the industrial flooring and commercial flooring sectors.

We have a fresh approach to flooring and are constantly looking to introduce world-class flooring systems that offer a number of performance advantages while at the same time make floors so much more than something to walk over. We are dedicated to producing environmentally friendly flooring materials and using our planet's resources responsibly across all of our operations to ensure a greener, more sustainable world at our feet.

Commercial Markets



Industrial Markets



An RPM Company...

Leader in Speciality Coatings & Sealants

- NET Sales of USD \$3.8bn
- 67% Industrial Products
- 33% Consumer Products
- RPM Shares are traded on the NYSE
- Over 300 Institutional Stockholders
- 82,000 Individual Stockholders
- Over 9,000 employee worldwide
- 78 manufacturing facilities globally
- Sales in over 150 countries
- Flowcrete sits within RPM's Performance Coatings Group



Contents

2	Welcome to Flowcrete...
2	An RPM Company...
4	Commercial Flooring
7	Project Questionnaire
9	Product Selector
11	FeRFA Guide
12	Decorative Terrazzo
18	Smooth Resin Finishes
22	Stone Carpets
26	Flowfast



Commercial Market Sectors

✓	Airports
✓	Education
✓	Healthcare
✓	Leisure
✓	Retail
✓	Stadia



Commercial Markets We Serve

Flowcrete UK offers a variety of joint-free commercial floor coatings and toppings to create a colourful, vibrant and decorative surface that will create a talking point in a wide range of commercial venues and environments.

With aesthetics and practicality being two of the necessary factors when designing or renovating a commercial establishment, Flowcrete can offer a wide range of seamless resin floor solutions to suit your every requirement. From highly luxurious and durable Mondéco systems, to 'natural-look' stone carpets which capture the ambience of the outdoors, make Flowcrete your choice for the right first impression.

The Flowcrete UK Commercial Flooring Team



Robert Gray
Scotland & North East
Regional Manager



Stephen Day
Isocrete Area Manager
North West & Yorkshire



Nigel Cook
Midlands & Ireland
Manager



Stephen Bird
South East Area
Manager



Tony Jenkins
South West
Area Manager



Stephen King
London Specification
Manager



Project Questionnaire Resin Finishes

To help us better understand the specific requirements of your environment, you can fill in the project questionnaire below, send it back to us and a member of our knowledgeable sales team will contact you.

Project Title		Project Number	
<input type="text"/>		<input type="text"/>	
Client Name		Contact	
<input type="text"/>		<input type="text"/>	
Specifier Company		Contact	
<input type="text"/>		<input type="text"/>	
Specifier Address		Date of Meeting	
<input type="text"/>		<input type="text"/>	
		Present	
<input type="text"/>		<input type="text"/>	

FUNCTIONAL REQUIREMENTS

Application Type	Commercial	Industrial	Food	Pharma	Health	Other
Relevant Standards	<input type="text"/>	<input type="text"/>	<input type="text"/>	<input type="text"/>	<input type="text"/>	<input type="text"/>
Size of Area m²	Location/Zone					
<input type="text"/>	<input type="text"/>					
Trafficking <i>(mark as appropriate)</i>						
Light foot traffic, occasional rubber tired vehicles.		LD	Regular foot traffic, frequent fork lift traffic, occasional hard plastic-wheeled trolleys.		MD	
Constant fork lift truck traffic, hard plastic wheeled trolleys, some impact.		HD	Severe heavily loaded traffic and impact.		VHD	

TYPE AND SIZE OF LOADING

Note: Screed substrates on insulation require load capacity assessment.

Imposed Load	Impact	Dynamic	Construction	
<input type="text"/>	<input type="text"/>	<input type="text"/>	MWEP	Scaffold

CHEMICAL RESISTANCE

(Extent, frequency, concentration, temp etc)

Cleaning	Spillage	Permanent
<input type="text"/>	<input type="text"/>	<input type="text"/>

TEMPERATURE

Normal Service	Cleaning	Radiant/Direct Heat	Under Floor Heating
<input type="text"/>	<input type="text"/>	<input type="text"/>	<input type="text"/>

APPEARANCE

Colour	Solid	Matt	Gloss
<input type="text"/>	Decorative	UV Stable	

Slip Risk				COVING		
High	Moderate	Low		Yes	No	Size
PTV 0-24	25-35	36+				
Contaminants				Applied To		Top Edge
ANTI-STATIC				PROGRAMME TIMING		
Resistance (ohms)				Winter Spring		Summer Autumn

SUBSTRATE & SITE CONDITIONS

Substrate Type	Age	Strength	Smooth	Contamination	DPM Beneath

PREPARATORY TREATMENT

Yes	No	Type

PRIMER

Yes	No	Type

JOINTS

Movement	Contraction	Day Work

EXPOSURE DURING CONSTRUCTION

Heat Light	Water Traffic	Protective Measures
Products Discussed and Thickness		
		Proposed System and Thickness

Agreed for Specifier/Client	Date
Agreed for Flowcrete UK Ltd	Date

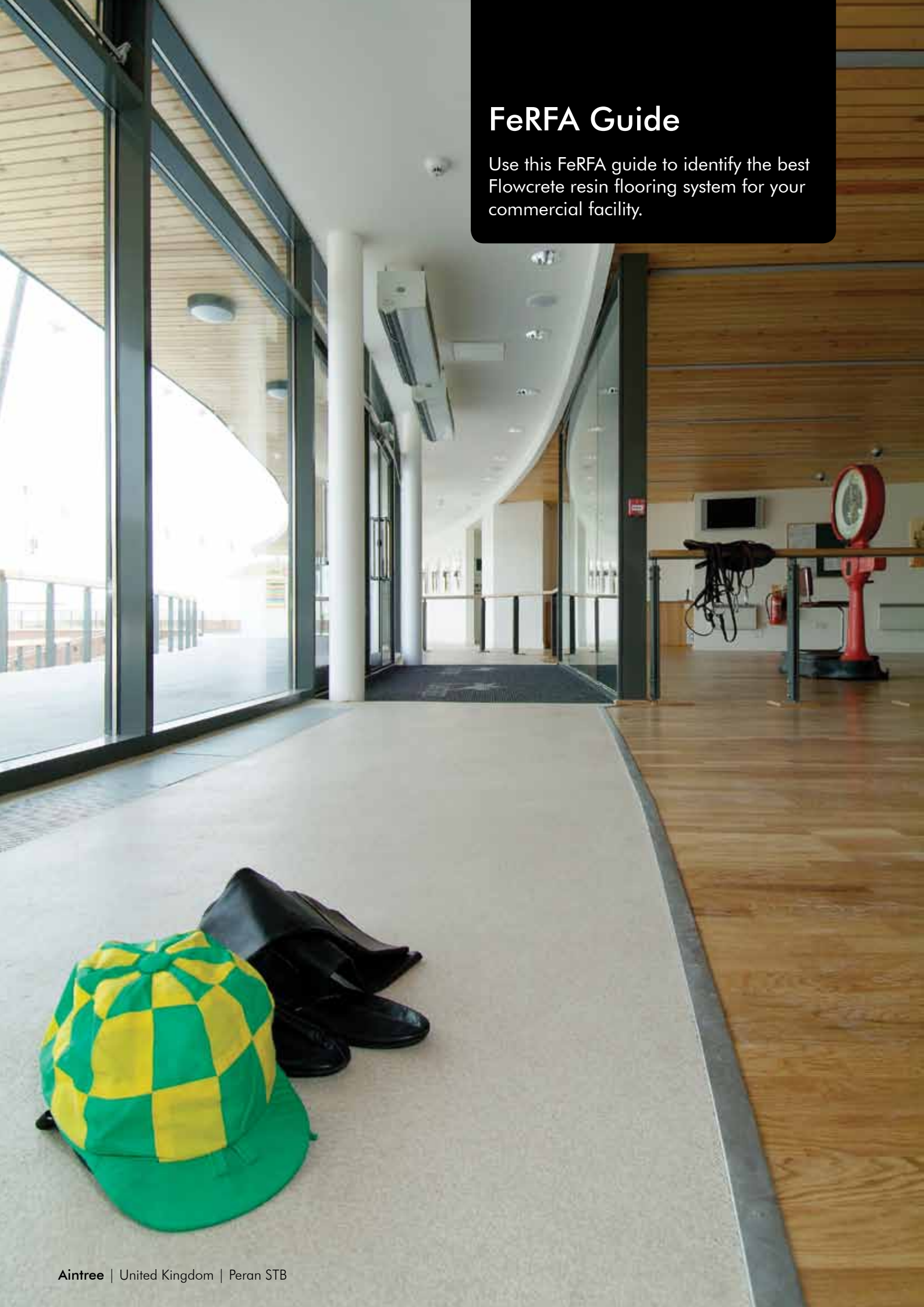
Product Selector

The table below is a product selector developed by Flowcrete to highlight the suitable use of Flowcrete floor finishes and flooring products...

Designated Area	Flowcrete Specialist Flooring System														
	Isocrete K Screed	Isowarm Underfloor Heating	Flowfresh PU Concrete	Rustik Stone Carpets	Flowfast MMA	Peran SL	Peran STB	Flowshield Quartz	Mondéco Terrazzo	Flowcoat SF41	Decksshield Systems	Flowfresh Systems	Rustik Glamourstone	Flowfast Systems	Flowsport
Reception Areas	✓			✓		✓									
Concourses	✓				✓				✓						
Corridors	✓				✓				✓						
WC Facilities					✓	✓	✓	✓							
Lift Lobby	✓	✓			✓				✓	✓					
Offices		✓		✓	✓	✓			✓						
Food Courts			✓		✓	✓	✓								
Kitchens										✓		✓			
Concessions						✓		✓	✓				✓	✓	
Supermarket		✓	✓		✓		✓	✓							
Bars, Restaurants & Nightclubs		✓		✓	✓	✓			✓						
Sports Halls & Gymnasiums		✓			✓		✓								✓
Swimming Pool Surrounds		✓			✓										
M & E Rooms / Stores										✓	✓				
Maintenance & Security Rooms										✓	✓				
Service Areas	✓						✓			✓					
Plant Rooms										✓				✓	
Car Parks	✓										✓				

FeRFA Guide

Use this FeRFA guide to identify the best Flowcrete resin flooring system for your commercial facility.





FeRFA Type 3 - Medium Duty, High Build Floor Coatings

Peran Floor Flakes (1mm)	✓	✓					✓
--------------------------	---	---	--	--	--	--	---

FeRFA Type 4 - Medium Duty, Multi Layer Flooring

Flowfast Terrosso (4mm)	✓	✓			✓		✓
Flowfast Kristaina (4mm)	✓	✓			✓		✓
Flowfast Metalika (4mm)	✓	✓			✓		✓

FeRFA Type 5 - Medium to Heavy Duty, Self-smoothing Floor Finishes

Flowshield Quartz (5mm)	✓	✓		✓			✓
Peran SL (5mm)	✓	✓		✓			✓
Peran Comfort (5mm)	✓	✓		✓			✓

FeRFA Type 6 - Medium to Heavy Duty, Trowel-applied, Resin Flooring

Peran STB (2-4mm or 3-5mm)	✓	✓	✓	✓			✓
Flowsport (6-9mm)	✓	✓	✓				✓
Naturewalk (3-4mm)		✓	✓				✓
Flowfast Quartz (3-6mm)	✓	✓	✓	✓	✓		✓
Rustik Glamourstone (8-12mm)		✓		✓			✓
Rustik Natural Stone (8-12mm)		✓		✓			✓

FeRFA Type 8 - Very Heavy Duty Resin Flooring

Mondéco Mirrazzo (7mm)	✓	✓	✓				✓
Mondéco Classic (8mm)	✓	✓	✓				✓
Mondéco Crystal Ice (8mm)	✓	✓	✓				✓
Mondéco Exotic (8mm)	✓	✓	✓				✓

Car Park Decking

Deckshield ED (2mm)		✓	✓	✓			✓
Deckshield ID (1.5mm)		✓	✓	✓			✓
Deckshield HD (3mm)		✓	✓	✓	✓		✓
Deckshield Rapide ED (2-4mm)		✓	✓	✓	✓		✓

Use the FeRFA guide shown above to identify the best Flowcrete resin flooring system for your commercial facility.

PERFORMANCE key



Contains Polygiene®, a silver-ion based antimicrobial agent.



Demonstrates sustained tolerance of temperatures >40°C.



Recommended for fast-track installation in order to minimise downtime.



Low slip potential in accordance with HSE and UKSRG guidelines.



Excellent resistance to acids, alkalis, fats, oils and other substances.



Electrostatic Dissipative (ESD) grades are available on request.



With correct maintenance offers 10 year life expectancy or greater.

Decorative Terrazzo

Glamorous yet durable floor finishes that can stand up to the heavy footfall of busy commercial spaces.

Application Suitability

✓	Retail outlets, boutiques and supermarkets
✓	Bars, restaurants and cafés
✓	Museums and art galleries
✓	Schools, colleges and universities
✓	Offices, meeting rooms and receptions

Technical Profile

APPLICATION SUITABILITY

- ✓ New build
- ✓ Refurbishment

THERMAL RESISTANCE

Tolerant up to sustained temperatures of 60°C

COMPRESSIVE STRENGTH

>55 N/mm²

BOND STRENGTH

Greater than cohesive strength of 25N/mm² > 1.5MPa

SLIP RESISTANCE

Dry >40 (low slip potential)

FIRE RESISTANCE

BS 476 - Part 7: Surface spread of flame Class 2

Mondéco Classic (9mm)

A seamless epoxy resin terrazzo floor finish that utilises a blend of marble chippings.

Suitable for use in airport and railway terminals, shopping centres, restaurants, hotels and environments where design aesthetics are of paramount concern.



Aesthetics



Easy to Clean



Abrasion Resistant



Bespoke Design



Colours



Agate Grey- Dawn



Agate Grey- Dusk



Dusty Grey- Dawn



Dusty Grey- Dusk



Oyster White- Dawn



Oyster White- Dusk



Provence Blue- Dawn



Provence Blue- Dusk





Colours



Oyster White



Agate Grey



Dusty Grey



Provence Blue

Iluma UEC | Singapore | Mondéco

Mondéco Crystal Ice (9mm)

A seamless epoxy resin terrazzo floor finish that utilises a blend of mirrored and clear glass chippings.

Suitable for use in airport and railway terminals, shopping centres, restaurants, hotels and environments where design aesthetics are of paramount concern.



Aesthetics



Easy to Clean



Abrasion Resistant



Bespoke Design

Technical Profile

APPLICATION SUITABILITY

✓ New build

✓ Refurbishment

THERMAL RESISTANCE

Tolerant up to sustained temperatures of 60°C

COMPRESSIVE STRENGTH

>55 N/mm²

BOND STRENGTH

Greater than cohesive strength of 25N/mm² >1.5MPa

SLIP RESISTANCE

Dry >40 (low slip potential)

FIRE RESISTANCE

BS 476 - Part 7: Surface spread of flame Class 2

Mondéco Exotic (9mm)

A seamless epoxy resin terrazzo floor finish that utilises a blend of marble chippings with mirrored glass or mother of pearl.

Mondéco seamless terrazzo is ideal for environments where design aesthetics and durability are of paramount concern.



Aesthetics



Easy to Clean



Abrasion Resistant



Bespoke Design

Colours



Agate Grey- Ice



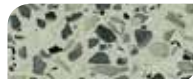
Agate Grey- Pearl



Dusty Grey- Ice



Dusty Grey- Pearl



Oyster White- Ice



Oyster White- Pearl



Provence Blue- Ice



Provence Blue- Pearl



Technical Profile

APPLICATION SUITABILITY

✓ New build

✓ Refurbishment

THERMAL RESISTANCE

Tolerant up to sustained temperatures of 60°C

COMPRESSIVE STRENGTH

>55 N/mm²

BOND STRENGTH

Greater than cohesive strength of 25N/mm² >1.5MPa

SLIP RESISTANCE

Dry >40 (low slip potential)

FIRE RESISTANCE

BS 476 - Part 7: Surface spread of flame Class 2



Mondéco Earth (7mm)

A hygienic epoxy terrazzo floor finish that can contain antimicrobial agent, Polygiene®

For use in environments where hygiene, chemical resistance and durability are of paramount concern such as food and pharmaceutical production areas.



Aesthetics



Hygienic



Chemical Resistant

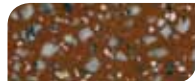


Abrasion Resistant

Colours



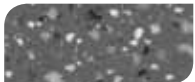
Agate Grey



Chilli Pepper



Coconut



Dusty Grey



Oyster White



Provence



Technical Profile

APPLICATION SUITABILITY

✓ New build

✓ Refurbishment

THERMAL RESISTANCE

Tolerant up to sustained temperatures of up to 60°C

COMPRESSIVE STRENGTH

>55 N/mm²

BOND STRENGTH

Greater than cohesive strength of 25N/mm² >1.5MPa

SLIP RESISTANCE

Dry >40 (low slip potential)

FIRE RESISTANCE

BS 476 - Part 7: Surface spread of flame Class 2





Smooth Resin Finishes

Our range self levelling resin floor finishes provide a smooth, decorative solution to your commercial needs.

Application Suitability

✓	Retail outlets, boutiques and supermarkets
✓	Bars, restaurants and cafés
✓	Museums and art galleries
✓	Schools, colleges and universities
✓	Offices, meeting rooms and receptions



Peran SL (2mm)

Smooth gloss self smoothing resin floor finish ideal for a minimalist, contemporary environment.

Peran SL is ideal for areas with intensive traffic such as shops, department stores, restaurants, garden centres and airports.



Aesthetics



Easy to Clean



Abrasion Resistant



Chemical Resistant

Colours



Goosewing Grey 222



Beige 326



Mid Grey 280



Emerald Green 740



Sky Blue 452



Yellow 340



Tile Red 637



Technical Profile

APPLICATION SUITABILITY

✓ New build

✓ Refurbishment

THERMAL RESISTANCE

Tolerant up to sustained temperatures of 50°C

COMPRESSIVE STRENGTH

>55 N/mm²

BOND STRENGTH

B2.7 (EN 13892-8)

SLIP RESISTANCE

Dry >40 (low slip potential)

FIRE RESISTANCE

B_{fl} - s1 (EN 13501-1)





Colours



Beige 326



Marine Blue 478



Mint Green 759



Salmon Pink 650



Vanilla Yellow 359



Sky Blue 452



Goosewing Grey 222

Starbucks | Hong Kong | Flowshield Quartz

Flowshield Quartz (2mm)

A smooth, glossy, self smoothing resin floor finish with a decorative speckled finish.

Ideal for a minimalist, modern, contemporary environment. Surprise your customers with your creativity - use Flowshield Quartz to make a statement.



Aesthetics



Easy to Clean



Abrasion Resistant



Chemical Resistant

Technical Profile

APPLICATION SUITABILITY

✓ New build

✓ Refurbishment

THERMAL RESISTANCE

Tolerant up to sustained temperatures of 50°C

COMPRESSIVE STRENGTH

>55 N/mm²

BOND STRENGTH

Greater than cohesive strength of 25N/mm² >1.5MPa

SLIP RESISTANCE

Dry >40 (low slip potential)

FIRE RESISTANCE

BS 476 - Part 7: Surface spread of flame Class 2

Peran Comfort (2-3mm)

A matt self-smoothing flexible polyurethane resin floor finish ideal for a minimalist, modern and contemporary environment.

Peral Comfort is ideal for areas with intensive traffic such as stores, supermarkets, restaurants, hospitals and schools



Aesthetics



Easy to Clean



Abrasion Resistant



Chemical Resistant

Colours



Oyster White



Signal White



Pebble Grey



Light Grey



Technical Profile

APPLICATION SUITABILITY

✓ New build ✓ Refurbishment

THERMAL RESISTANCE

Tolerant up to sustained temperatures of 40°C

BOND STRENGTH

B1.5 (EN 13892-8)

SLIP RESISTANCE

Dry >40 (low slip potential)

FIRE RESISTANCE

B_f - s1 (EN 13501-1)





Stone Carpets

Our range of Stone Carpets provide a durable, anti-slip surface that has been developed to reflect the natural beauty of the outdoors.

Application Suitability

✓	Retail outlets, boutiques and supermarkets
✓	Bars, restaurants and cafés
✓	Museums and art galleries
✓	Schools, colleges and universities
✓	Offices, meeting rooms and receptions



Technical Profile

APPLICATION SUITABILITY

✓ New build

✓ Refurbishment

THERMAL RESISTANCE

Tolerant up to sustained temperatures of up to 50°C

COMPRESSIVE STRENGTH

>50 N/mm²

BOND STRENGTH

Greater than cohesive strength of 25N/mm² > 1.5MPa

SLIP RESISTANCE

Dry >40 (low slip potential)

FIRE RESISTANCE

Certificate No. 1721/75 SITAC: Class G



Aesthetics



Rapid Installation



Abrasion Resistant



Slip Resistant



Rustik Glamourstone (8-12mm)

Colourful pieces of marble encapsulated in a clear resin to produce an attractive floor finish.

Rustik Glamourstone is ideal for use in car showrooms, retail stores, conservatories, atriums, receptions halls, conference zones, use limited only by your imagination.

Colours



Black



Green



Beige



Dark Grey



Pink



Red



White

Rustik Natural Stone (8-12mm)

Natural stone particles encapsulated in a clear resin binder to produce an attractive floor finish.

Rustik Natural Stone is ideal for use in car showrooms, designer outlets, retail stores, conservatories and reception halls.

Colours



Light



Golden Pea



Silver Granite



Yellow Gravel

Naturewalk (1-3mm)

A seamless, slip-resistant bonded gravel system made from a range of natural stone aggregates scattered into a polyurethane resin binder.

Primarily used to surface outdoor areas subject to heavy footfall such as leisure complexes, theme parks, and other points of interest.



Aesthetics



Rapid Installation



Abrasion Resistant



Slip Resistant

Colours



T Quartz



Guyanaan Bauxite



Brittany Bronze



Chinese Buff Bauxite

Technical Profile

APPLICATION SUITABILITY

✓ New build

✓ Refurbishment

THERMAL RESISTANCE

Softens over 70°C, hardens on cooling

WATER PERMEABILITY

Nil - Karsten Test (Impermeable)

BOND STRENGTH

Greater than cohesive strength of 25N/mm² >1.5MPa

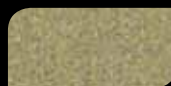
SLIP RESISTANCE

Dry >40, Wet >40 (low slip potential)

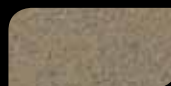




Colours



Biscuit 102



Beige 101



Grass Green 601



Mid Blue 501



Light Grey 701



Mid Grey 702



Dark Grey 703



Black 901

Barnsley Academy | United Kingdom | Peran STB Classic

Peran STB Classic (4mm)

A hard wearing, decorative resin floor topping made up of colour stable quartz granules encapsulated in a clear resin binder.

Peran STB Classic is a hand-trowelled, matt finish system suitable for areas that are subject to heavy traffic, impact and chemical spills.



Aesthetics



Easy to Clean



Abrasion Resistant



Chemical Resistant

Technical Profile

APPLICATION SUITABILITY

✓ New build

✓ Refurbishment

THERMAL RESISTANCE

Tolerant up to sustained temperatures of up to 50°C

COMPRESSIVE STRENGTH

>40 N/mm²

BOND STRENGTH

Greater than cohesive strength of 25N/mm² >1.5MPa

SLIP RESISTANCE

Dry >40 (low slip potential)

FIRE RESISTANCE

C_{fl} - s1 (EN 13501-1)

The image shows a large, modern arena with rows of blue seats. The floor is a light-colored, polished material with yellow and white markings. The background features a dark wall with a sign that says "yarena".

Flowfast

Using an MMA catalyst to speed up the floor's rate of cure, Flowfast is an excellent choice for refurbishment projects, shop fit-outs or even fast-paced new build developments.

Application Suitability

✓	Retail outlets, boutiques and supermarkets
✓	Bars, restaurants and cafés
✓	Museums and art galleries
✓	Schools, colleges and universities
✓	Offices, meeting rooms and receptions

Flowfast Terrosso (4mm)

A seamless, decorative, hard wearing acrylic resin floor finish developed to enable very fast track installations

Flowfast Terrosso is ideal for use in public areas, shops and showrooms, department stores, airports, schools and hospitals.



Rapid Installation



Aesthetics



Easy to Clean



Chemical Resistant

Colours (1-3mm Flakes)



Beige 112



Blue 511



Cream 111



Dark Grey 714



Mid Grey 713



Light Grey 711



Red 311



Signal Grey 712

Colours (5-7mm Flakes)



Beige 112



Blue 511



Cream 111



Dark Grey 714



Mid Grey 713



Light Grey 711



Red 311



Signal Grey 712

Technical Profile

APPLICATION SUITABILITY

- ✓ New build
- ✓ Refurbishment

THERMAL RESISTANCE

Tolerant up to sustained temperatures of 50°C

BOND STRENGTH

Greater than cohesive strength of 25N/mm² >1.5MPa

SLIP RESISTANCE

Dry >40 (low slip potential)

FIRE RESISTANCE

C_{fi} - s1 (EN 13501-1)



Technical Profile

APPLICATION SUITABILITY

- ✓ New build
- ✓ Refurbishment

THERMAL RESISTANCE

Tolerant up to sustained temperatures of up to 70°C

COMPRESSIVE STRENGTH

>60 N/mm²

BOND STRENGTH

Greater than cohesive strength of 25N/mm² > 1.5MPa

SLIP RESISTANCE

Dry >40 (low slip potential)

FIRE RESISTANCE

B_{fl} - s1 (EN 13501-1)

Flowfast Quartz Classic (4mm)

A hard wearing, decorative resin floor topping made up of colour stable quartz granules encapsulated in a clear resin binder.

Flowfast Quartz Classic has been developed to enable very fast track installations, typically 2 hours curing time to receive full traffic.



Rapid Installation



Aesthetics



Easy to Clean



Chemical Resistant



Colours



Biscuit 102



Beige 101



Grass Green 601



Mid Blue 501



Light Grey 701



Mid Grey 702



Dark Grey 703



Black 901





Kosmeteria | Poland | Flowfast Metalika

Flowfast Metalika (4mm)

A metallic floor finish which contains varying sizes of metallic flakes swept over an acrylic resin base coat and finished with a clear sealer.

Flowfast Metalika has been developed to enable very fast track applications, therefore dramatically reducing program time.

 **Rapid Installation**

 **Aesthetics**

 **Easy to Clean**

 **Abrasion Resistant**

Technical Profile

APPLICATION SUITABILITY

- ✓ New build
- ✓ Refurbishment

THERMAL RESISTANCE

Tolerant up to sustained temperatures of up to 50°C

BOND STRENGTH

Greater than cohesive strength of 25N/mm² >1.5MPa

SLIP RESISTANCE

Dry >40 (low slip potential)



Colours



Azure Blue



Pacific Blue



Cranberry



Emerald



Granite



Ebony



Clementine



Gold



Peacock



Dalmation

Selfridges | United Kingdom | Flowfast Kristalina

Flowfast Kristalina (4mm)

A decorative smooth sparkling resin floor finish ideal for a modern contemporary environment.

Flowfast Kristalina has been developed to enable very fast track applications, therefore dramatically reducing program time.



Rapid Installation



Aesthetics



Easy to Clean



Abrasion Resistant

Technical Profile

APPLICATION SUITABILITY

✓ New build

✓ Refurbishment

THERMAL RESISTANCE

Tolerant up to sustained temperatures of up to 50°C

BOND STRENGTH

Greater than cohesive strength of 25N/mm² >1.5MPa

SLIP RESISTANCE

Dry >40 (low slip potential)



10:00 pm
Student Technology Fair
10:00 am - 10:00 pm
10:00 am - 10:00 pm
10:00 am - 10:00 pm

SI THEATRE



Flowcrete around the world

Manufacturing Centres

UK	Flowcrete UK Ltd	Tel: +44 1270 753 000	Fax: +44 1270 753 333	Email: uk@flowcrete.com
Sweden	Flowcrete Sweden AB	Tel: +46 42 600 07 00	Fax: +46 42 15 50 90	Email: sweden@flowcrete.com
India	Flowcrete India Pvt Ltd	Tel: +91 44 4202 9831	Fax: +91 44 4202 9832	Email: india@flowcrete.com
Malaysia	Flowcrete Asia Sdn Bhd	Tel: +60 3 6277 9575	Fax: +60 3 6277 4645	Email: malaysia@flowcrete.com
South Africa	Flowcrete SA (Pty) Ltd	Tel: +27 31 461 3411	Fax: +27 31 461 3475	Email: southafrica@flowcrete.com
USA	Flowcrete North America Inc.	Tel: +1 936 539 6700	Fax: +1 936 539 6701	Email: usa@flowcrete.com
Belgium	Flowcrete Belgium	Tel: +32 157 569 27	Fax: +32 157 528 94	Email: belgium@flowcrete.com

Sales Centres

Australia	Flowcrete Australia Pty Ltd	Tel: +61 7 3205 7115	Fax: +61 7 3205 3116	Email: australia@flowcrete.com
Baltic States	Flowcrete Baltics	Tel: +37 1 2864 4666	Fax: +48 22 879 8918	Email: latvia@flowcrete.com
Canada*	Flowcrete Canada	Tel: +1 936 539 6700	Fax: +1 936 539 6701	Email: canada@flowcrete.com
China	Flowcrete China	Tel: +86 10 8472 1912	Fax: +86 10 8472 1942	Email: china@flowcrete.com
Denmark	Flowcrete Sweden AB	Tel: +45 3155 7882	Fax: +46 42 15 50 90	Email: denmark@flowcrete.com
France	Flowcrete France SAS	Tel: +33 1 60 61 74 42	Fax: +33 1 64 33 11 61	Email: france@flowcrete.com
Hong Kong	Flowcrete (Hong Kong) Ltd	Tel: +852 2795 0478	Fax: +852 2795 4842	Email: hongkong@flowcrete.com
Indonesia	Flowcrete Indonesia	Tel: +62 21 252 3201	Fax: +62 21 252 0720	Email: indonesia@flowcrete.com
Mexico*	Flowcrete Mexico	Tel: +1 936 539 6700	Fax: +1 936 539 6701	Email: mexico@flowcrete.com
Norway	Flowcrete Norway AS	Tel: +47 6486 0830	Fax: +47 6486 0831	Email: norway@flowcrete.com
Poland	Flowcrete Polska Sp. z o.o.	Tel: +48 22 879 8907	Fax: +48 22 879 8918	Email: poland@flowcrete.com
Romania*	S.C. Flowcrete Romania s.r.	Tel: +40 374 00 80 78	Fax: +40 21 255 03 15	Email: romania@flowcrete.com
Russia*	Flowcrete RUS	Tel: +7 (495) 645 83 18	Fax: +7 (495) 645 83 18	Email: rus@flowcrete.com
South Korea*	Flowcrete Corporation	Tel: +82 2 2649 3874	Fax: +82 2 2649 3878	Email: southkorea@flowcrete.com
Thailand	Flowcrete Thailand	Tel: +66 2530 9611	Fax: +66 2530 9610	Email: thailand@flowcrete.com
UAE	Flowcrete Middle East FZCO	Tel: +97 14 886 4728	Fax: +97 14 886 4582	Email: uae@flowcrete.com
Vietnam	Flowcrete Vietnam	Tel: +84 8 38216561	Fax: +84 8 3821 6501	Email: vietnam@flowcrete.com

*Partner Company

Whilst every care has been taken to ensure that the information included in this document was accurate at the time of printing, Flowcrete reserve the right to change product specifications at any time without prior notice. The photographs and colours reproduced in this publication are within the constraints of the printing process and are not to be used for matching purposes. All photographs are used for approximate representation only and may not show the actual products on offer. E&OE.